

Elizabethan 23

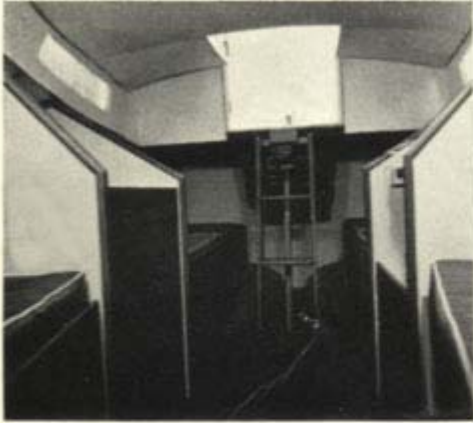


Elizabethan 23

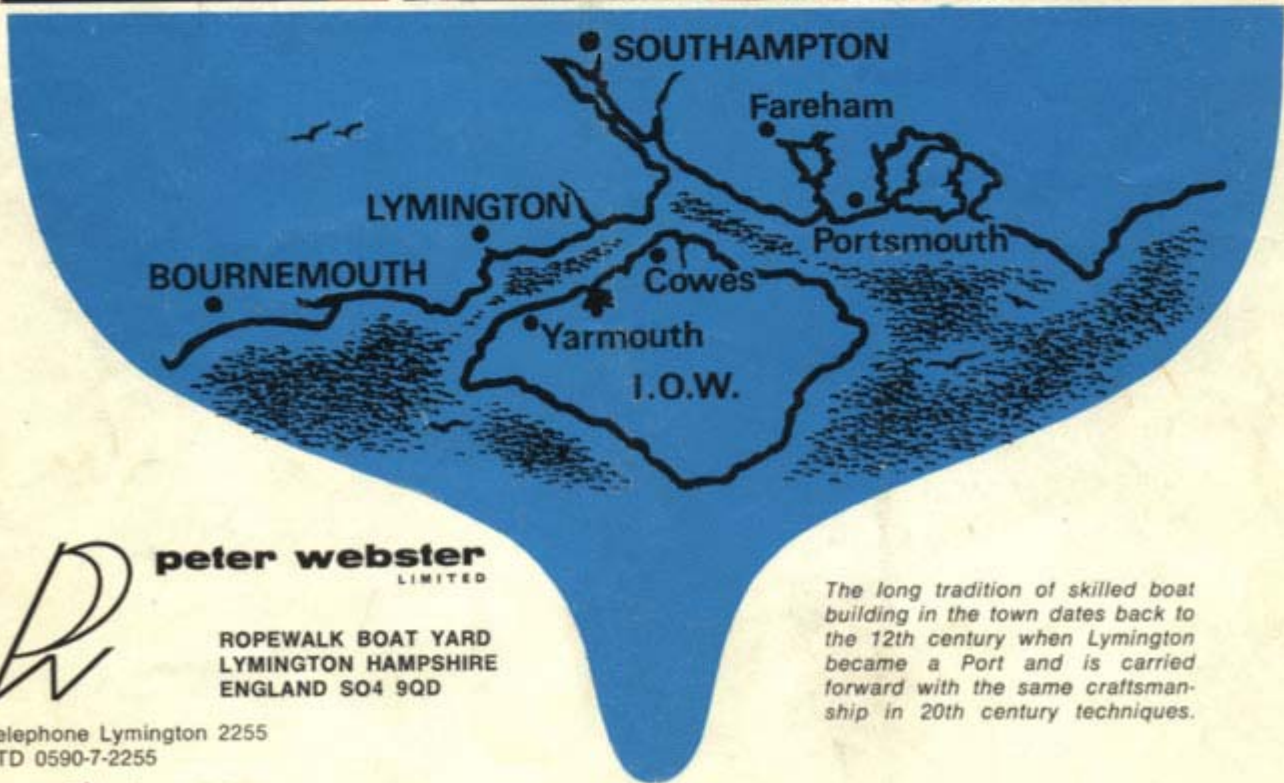
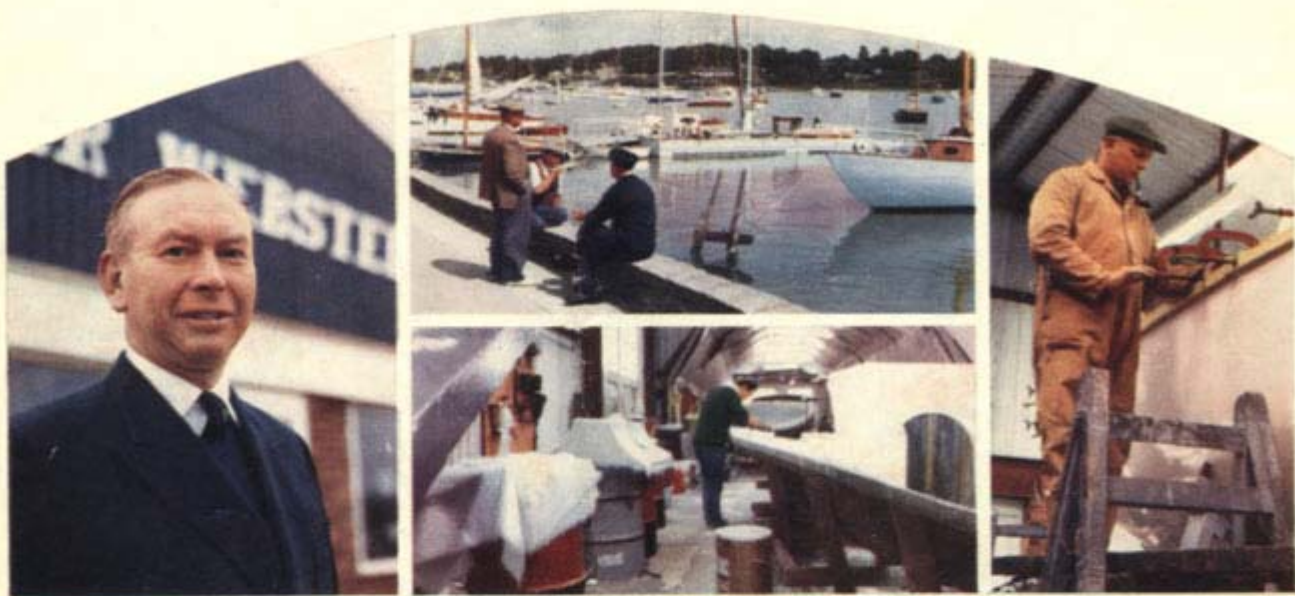
The Elizabethan '23' is a real yacht in miniature with clean lines and good sailing performance, centre-plate drawing only 2' 6" with the plate up, 4' 11" with the plate down. It has exceptional stability for this size of craft. The decks are uncluttered and laid out for real sailing with ample guardrails and pulpit and opening hinged forehatch. Power is by outboard motor driving through a well in the aft locker, this is easily controlled from the cockpit.

This craft is finished with teak trim inside and out, the interior accommodation is an open plan with two forward berths and flush toilet situated between these berths. A central galley, with gimballed cooker on the port side, stainless steel sink with piped fresh water to starboard. Aft from the galley two large berths. The interior is trimmed to give a visual absence of glassfibre.





Printed in England



peter webster
LIMITED

ROPEWALK BOAT YARD
LYMINGTON HAMPSHIRE
ENGLAND SO4 9QD

Telephone Lymington 2255
STD 0590-7-2255

0590 67 6525

The long tradition of skilled boat building in the town dates back to the 12th century when Lymington became a Port and is carried forward with the same craftsmanship in 20th century techniques.

Elizabethan '23'

<u>Dimensions</u>	Length overall	23'0" (6.8 metre)
	Length waterline	18'6" (5.4 ")
	Beam extreme	7'1" (2.2 ")
	Draft plate up	2'6" (0.7 ")
	Draft plate down	4'11" (1.3 ")
	Displacement	1 ton 14 cwt

<u>Sail Areas</u>	Mainsail	99 sq ft (9.1 sq m)
	Genoa	150 sq ft (13.4 ")
	Working Jib	92½ sq ft (8.3 ")

Specification

Construction

All glass fibre hull and deck. Deck sandwich construction with non-slip pattern. Rudder glass fibre on stainless steel hangings with tufnol bearings. Keel iron 16 cwt with 88 lb steel centre-plate bolted on. Centre-plate case integrally moulded with hull below saloon floor.

Engine

An outboard well is moulded into the hull with special locker for motor stowage. We recommend an outboard in the 6 to 9 h.p. range. An inboard engine can also be fitted.

Plumbing

All through fittings below waterline have seacocks, fresh water tank 20 gallons piped to pump in galley. Galley sink with drain to seacock. Marine toilet fitted. Two cockpit drains plumbed to skin fitting. Whale bilge pump fitted in cockpit locker.

Accommodation

All teak joinery with vynide covered bulkheads, deckhead and shipside lined throughout. Four full length berths fitted with 4" foam upholstery vynide covered, with vents. Ventilation by Tannoy ventilites throughout. Two burner stove in gimbals

Deck Gear

All teak woodwork. Laminated teak tiller. One pair sheet winches fitted with adjustable sheeting points port and starboard. Pulpit in stainless steel with guard rails. All deck fittings and mooring cleats in stainless steel aluminium alloy or chrome plated bronze.

Ground Tackle

10 fathoms 1½" nylon anchor warp shackled to a 15 lb Danforth anchor

Rigging

All standing rigging 1 x 19 stainless steel. Shrouds fitted with rollers. Stainless steel bottle-screws with stainless steel toggles. Running rigging pre-stretched terylene.

Mast and Spars

Gold anodised, sound deadened aluminium alloy mast fitted with jib halyard winch. Stainless steel fittings. Gold anodised sound deadened aluminium alloy boom fitted with roller reefing gear and stainless steel fittings. Mast in tabernacle

Due to progressive development and availability specification is subject to alteration without notice

1271



peter webster
LIMITED

ROPEWALK BOAT YARD
LYMINGTON HAMPSHIRE
ENGLAND SO4 400

TELEPHONE 2225
STD 0980-7-2225

Elizabethan '23'

Price List

	£	
Elizabethan '23' afloat at Lyminster ready for sea	2,225-00	Mark I or Mark II
Name painted on port and starboard sides of doghouse	5-50	
Compass, Sestral Medina fitted	24-00	
Echo sounder, Seafarer fitted	42-00	
Log, Walker K.D.O. distance only	40-00	
Stern pulpit fitted	25-00	
Horseshoe lifebuoy lashed to pulpit	5-50	
Inflatable fenders 17" x 4"	1-50	
Mooring warp 1½" 8 fathom Nelson	2-00	
Distress flares in waterproof pack	5-50	
Johnson 6 h.p. long shaft outboard complete with fuel tank, forward and reverse gears and controls	190-00	
Stuart Turner inboard engine complete with electric start and remote controls mounted	400-00	
Sails Mainsail	32-00	
Working jib	29-40	
Genoa	37-80	
Storm jib	13-20	
Mainsail cover	12-60	
Spinnaker	40-20	
Spinnaker gear	32-00	



Prices are subject to alteration without notice

1271



peter webster
LIMITED

ROPEWALK BOAT YARD
LYMINGTON HAMPSHIRE
ENGLAND SO4 9DD

TELEPHONE 2255
STD 0986-7-2255